





CRANK UP YOUR NEXT ADVENTURE

MALIBU IS THE BEST-SELLING, MOST INNOVATIVE, AND MOST VERSATILE WATERSPORTS BOAT IN THE WORLD. NO MATTER WHAT YOU WANT TO DO OUT ON THE WATER—RIDE, SURF, SKI, TUBE, OR CRUISE—A MALIBU IS THE ONLY BOAT BUILT AND PROVEN TO DO IT ALL BETTER THAN ANYBODY ELSE, WITH A FOCUS ON UNRIVALED PERFORMANCE, QUALITY, VERSATILITY, AND LUXURY. MAKE NO MISTAKE: OUR COMPETITORS LIKE TO TALK BIG, BUT THE TRUTH IS ON THE WATER. GET OUT THERE

AND SEE FOR YOURSELF WHY MALIBU IS BEYOND QUESTION THE LEADER OF THE PACK, WITH FIRST-TO-MARKET, GAME-CHANGING INNOVATIONS AND—THANKS TO OUR AMAZING CUSTOMERS—THE LION'S SHARE OF SALES WORLDWIDE, YEAR AFTER YEAR.

WE GIVE YOU THE BEST SO YOU CAN DO YOUR BEST—AND ENJOY A LIFE WITHOUT LIMITS ON THE WATER.



CONTENTS

6	INNOVATION TIMELINE	28	WAKESETTER SERIES
8	TOWERS	72	RESPONSE SERIES
10	COMMAND CENTER	82	SALT RESISTANCE PERFORMANCE
14	POWER WEDGE II	84	MALIBU PRO TEAM
16	QUAD HARD-TANK BALLAST	86	MALIBU LIFE
18	SURF GATE	88	GEL-COAT COLORS
20	POWER	90	FEATURED OPTIONS
24	THE MALIBU WAY	92	STANDARD PACKAGES & OPTIONS





FROM UPSTART TO LEADER OF THE PACK

1982

+ Malibu is born in California

1984

+ The Malibu Skier

1989

+ Tennessee manufacturing facility

1991

+ Malibu's 18-function Electronic Management System

+ Euro-f3 Series ski boats, inspired by European car designs

+ First swivel-head ski pylon

CONSISTENT RECOGNITION

19

Boat of the Year wins (and 31 Product Excellence awards)

+ Computron, the watersports world's first onboard computer system

+ Fiberglass Engine Chassis System (FibECS)

+ Monsoon engines, with electronic fuel injection

+ Echelon, Boat of the Year

1993

+ The Malibu Sport V-drive

1996

+ New hydrofoil technology, the Wedge

+ Multisport Diamond Hull

1998

EVER HIGHER DEMAND

35%

Market share—Malibu sells almost as many boats as our top two competitors combined

60,000+

Malibu boats on the water—and counting

BUILT SAFE. BUILT TO LAST

2000

+ High-end vinyl-wrapped dashes

2001

+ MSCAN navigation system, with GPS

+ Malibu beams jump to 102 inches

2002

+ Wakesetter XTi, Towboat of the Year

2004

+ Gorilla fins added to V-drives

+ Wakesetter 23 LSV, best-selling watersports boat of all time

2006

+ The Wedge evolves into the electronic Power Wedge

2009

+ Malibu creates Axis Wake Research

+ MaliView, with a 6.5-inch multifunction screen

2010

+ The G3 tower, built in-house

2012

+ Pickle-fork MXZ Series

+ Response TXi

2013

+ Surf Gate, the ultimate wakesurf system

2014

+ New multisport ride/surf/ski hulls

+ Visual and audible wakesurf transfer signaling

ACCELERATED GROWTH: 2009-2014

10% IN 5 YEARS

Market-share growth (from 23 to 33 percent total) to become #1



Once again proving its unrivaled position as the industry's number-one innovator, Malibu introduces the most new features and technological advances in one model year in the history of the watersports industry. Turn the page to discover the G4 Tower, Command Center, Power Wedge II, and a host of other industry-leading innovations.

THE UNRIVALED INNOVATOR

2015

TOWERS

G4 TOWER: MALIBU'S CUTTING-EDGE G4 TOWER IS A TORTURE-TESTED FEAT OF ENGINEERING WITH THOUSANDS OF R&D HOURS BEHIND IT, SETTING A NEW GOLD STANDARD FOR THE WATERSPORTS INDUSTRY. AEROSPACE ALUMINUM AND AN INTERNAL HONEYCOMB STRUCTURE PROVIDE THE OPTIMAL STRENGTH-TO-WEIGHT RATIO, MAKING THE G4 THREE TIMES MORE RIGID THAN EVEN ITS PREMIUM PREDECESSOR. MALIBU'S EXACTING ATTENTION TO DETAIL IS EVIDENT IN THE AUTOMATIC VISIBLE LOCKS, A COMPLETELY

INTEGRATED WIRING HARNESS, Z5 BIMINI COMPATIBILITY, AND ZERO PINCH POINTS. THE G4'S SLEEK, AGGRESSIVE DESIGN IS APT FOR SUCH A TECHNOLOGICALLY ADVANCED TOWER, BUT IT'S ALSO AS USER-FRIENDLY AS CAN BE, TAKING LESS THAN 30 POUNDS OF FORCE TO EASILY LIFT, LOWER, AND LATCH.

G3.2 TOWER: MALIBU IS THE ONLY MAKER IN ITS SEGMENT TO MANUFACTURE ITS TOWERS IN-HOUSE, INCREASING AND CONTROLLING QUALITY WHILE REDUCING COST,

AND THE G3.2 IS OUR 2015 EVOLUTION OF LAST YEAR'S PREMIUM G3. WHILE IT FEATURES EASY LATCHING, POWERFUL LIGHTS, STAINLESS-STEEL HOOPS, AND ANODIZED AND POWDERCOATED COMPONENTS, THE G3.2 CAN ALSO GO BEYOND UTILITY AND STRENGTH TO HOUSE A SERIOUS SOUND SYSTEM: OPT FOR SWIVEL-MOUNTED, HIGH-FIDELITY G-FORCE WET SOUNDS SPEAKERS TO SET THE SOUNDTRACK FOR YOUR RIDE.



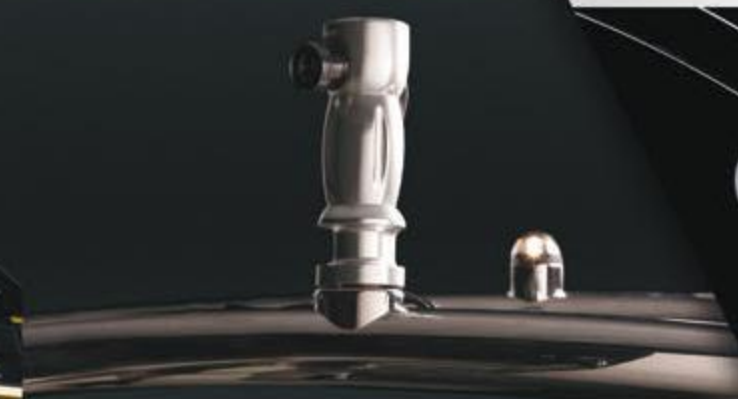
1. G4 & G3.2 TOWER LIGHTS



2. Z5 CARGO RACK & NEW BIMINI OPTIONS



3. HD FLO-CAM



4. G-FORCE ICON 8 TOWER SPEAKERS



5. G4 & G3.2 PTM CLAMPING SPINNER BOARD RACKS



6. G4 & G3.2 SKI RACK



7. G-FORCE REV 8 TOWER SPEAKERS WITH HORN



8. G3.2 TOWER MIRROR



▶ 1. **G4 & G3.2 TOWER LIGHTS**

These light up a wide area off the transom and also serve as flashing indicators for Surf Gate transfer timing. Available in black or white, in sets of four for the G3.2, and in sets of two for the G4.

▶ 2. **Z5 CARGO RACK & NEW BIMINI OPTIONS**

The top-of-the-line Z5 provides ample shade and also holds boards, inflatables, and accessories. It tilts down for easy loading from the boat and includes quick-connect tie-down straps for safe trailering. Malibu's new standard bimini provides shade and rope storage. The Deluxe Surf bimini offers the same but with surfboard storage as well.

▶ 3. **HD FLO-CAM**

This high-definition rear-view camera works with the swivel-head tower pylon to follow the rider in tow, adjusting to any distance. Footage is viewable live or recorded on the MaliView.

▶ 4. **G-FORCE ICON 8 TOWER SPEAKERS**

Wet Sounds eight-inch tower speakers with tweeter offer full mid-bass sound and clean detailed highs. Feature Malibu-designed G-Force enclosure with new waterproof connectors and optional swivel mounts. Powered by 500-watt Rockford Fosgate amp.

▶ 5. **G4 & G3.2 PTM CLAMPING SPINNER BOARD RACKS**

These aerospace-grade, anodized-aluminum swivel racks are corrosion-resistant and ratchet down with the slightest tug on a single lever, securing your wakeboards, wakesurfers, or wakeskates. *Wakeboarding Magazine* called these "the best board racks ever."

▶ 6. **G4 & G3.2 SKI RACK**

Accommodates two slalom skis with easy-access bungeed forks to free up storage areas on board. Port/starboard or both available.

▶ 7. **G-FORCE REV 8 TOWER SPEAKERS WITH HORN**

Wet Sounds eight-inch tower speakers with horns, new waterproof connectors, and optional swivel mounts. They sound great with amps.

▶ 8. **G3.2 TOWER MIRROR**

Housed in an aluminum billet with an adjustable arm, this mirror offers high-definition, prescription-grade optics with a 140-degree field of view.

COMMAND CENTER

THIS YEAR, MALIBU BECOMES THE FIRST TO MARKET WITH A 12-INCH TOUCHSCREEN, WHICH JOINS OUR SEVEN-INCH MTC TO FORM THE DISPLAY FOR OUR PEERLESS NEW COMMAND CENTER, GIVING THE DRIVER ENDLESS DATA IN AN EASY-TO-NAVIGATE INTERFACE. EVERY MAJOR FEATURE IS ON THE HOME SCREEN, MENU PATHS HAVE BEEN STREAMLINED, AND EACH COMPONENT MEETS IP60 WATER-INTRUSION STANDARDS.

BUILT WITH MORE PROCESSING POWER, HIGHER LEVELS OF INTEGRATION, A FEATURE-PACKED NEW OPERATING SYSTEM, AND POWERFUL WIRELESS CONNECTIVITY, THE NEW COMMAND CENTER IS AS REFINED AND EASY TO USE AS THAT OF ANY LUXURY CAR, ITS BRIGHT, HIGH-RESOLUTION DISPLAYS REPRESENTING THE MOST ADVANCED SCREEN TECHNOLOGY AVAILABLE. BOTH DISPLAYS ARE GLAREPROOF, AND A 170-DEGREE VIEWING ANGLE ALLOWS YOU TO READ THEM FROM ANY HELM POSITION, NO MATTER THE LIGHT CONDITIONS. AN OPTIONAL REAR-VIEW CAMERA LETS THE DRIVER WATCH RIDERS WHILE STILL ENJOYING A COMPREHENSIVE, REAL-TIME

READOUT OF ALL BOAT OPERATIONS, AND WITH THE ENGINE OFF, THE REAR-VIEW DISPLAY BECOMES A PDF VIEWER FOR THE OWNER'S MANUAL. A PUSH OF THE INGENUOUS "GO HOME" BUTTON RELEASES ALL YOUR BALLAST, DISENGAGES SURF GATE, STOWS THE POWER WEDGE II, AND SETS SPEED CONTROL AT 20 MILES PER HOUR.

THE NEW COMMAND CENTER'S SPORT DASH OPTION INCLUDES AN EXPANDABLE SMARTPHONE CRADLE, DRY-STORAGE BOX WITH USB CHARGER, AND A NEW, INTUITIVE ANALOG CONTROL DIAL FOR THE SURF GATE, POWER WEDGE II, SPEED, AND STEREO. THIS NEW DIAL IS A GREAT CONVENIENCE AND A CINCH TO GET THE HANG OF, ALLOWING THE DRIVER TO CONTROL ALL OF THE ABOVE WITH ONE HAND—AND WITHOUT TAKING THEIR EYES OFF THE WATER. ONLY MALIBU OFFERS ITS CUSTOMERS SO MUCH VERSATILITY, WITH BOTH A STATE-OF-THE-ART DIGITAL INTERFACE AND SUCH A SMART BUT SIMPLE HANDS-ON CONTROL.

MALIVIEW

The MaliView 12-inch touchscreen gives you fast, easy access to customizable rider presets, media controls, and a variety of rich gauge displays.

MTC

The Malibu Touch Command seven-inch touchscreen provides simple control of all systems, including the Power Wedge II, Surf Gate, ballast, navigation, rider presets, music, and lights. Coming standard on the new Command Center is the Mobile Device Gateway, which streams audio and uploads rider presets via Bluetooth and the free Perfect-Pull smartphone app.

ROCKFORD FOSGATE STEREO SYSTEM

This Malibu exclusive includes a 4GB thumb drive and features 45x4 watts of power, AM/FM tuner, touchscreen display, and iPod/iPhone control, plus it's compatible with MP3s, MPEGs, and Sirius satellite radio.

1. MaliView
2. MTC & Rockford Fosgate stereo system
3. New analog control dial
4. Expandable smartphone cradle
5. New steering wheel



CREATE PERFECT CUSTOM WAKES & WAVES WITH EASE

HOW MALIBU GIVES EVERY RIDER EXACTLY WHAT THEY WANT

COMMAND CENTER

TOTAL WAKE & WAVE CONTROL AT YOUR FINGERTIPS

POWER WEDGE II

HYDRAULIC & 21% BIGGER. NEW UPWARD ANGLE. PLANE IN MUCH LESS TIME. HUGE WAKES.

SURF GATE

MAKE WAVES. TRANSFER FROM SIDE TO SIDE IN SECONDS. REGULAR OR GOOFY FOOT.

BALLAST SYSTEMS

QUAD HARD TANKS + PLUG 'N' PLAY. FILL OR DRAIN IN 2-3 MINS.

THE WORLD'S MOST INNOVATIVE & VERSATILE WAKE/WAVE SYSTEM

BEGINNER



INTERMEDIATE



ADVANCED



PRO



ENDLESS RIDE & SURF OPTIONS FOR EVERYONE

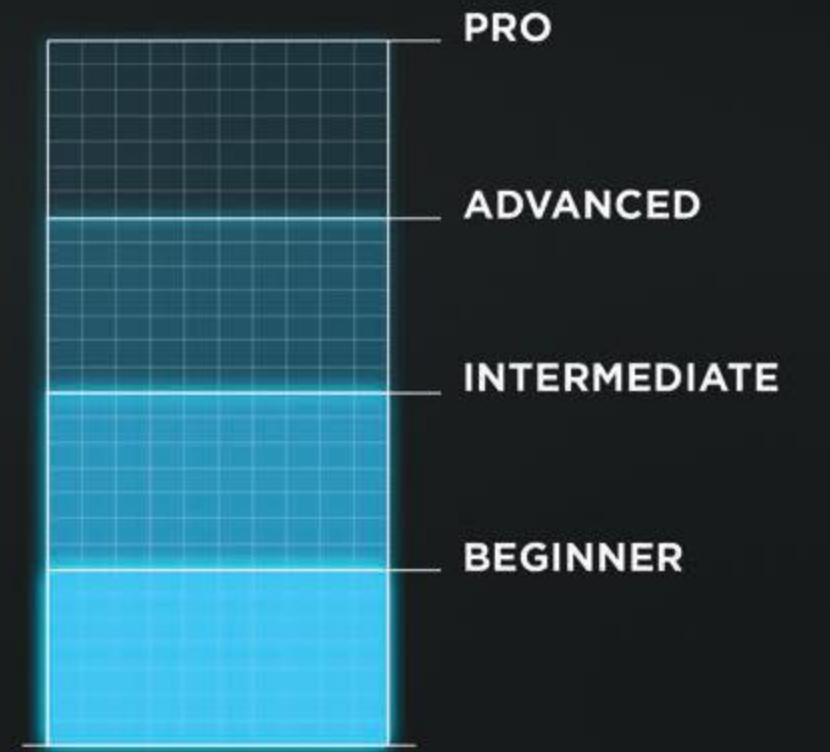


POWER WEDGE II

▶ THE BIGGER, MORE VERSATILE, HYDRAULIC POWER WEDGE II FEATURES A LARGER FOIL WITH A 21 PERCENT SURFACE-AREA INCREASE, WHICH EQUATES TO AN ADDITIONAL 300 POUNDS OF SIMULATED BALLAST, FOR A TOTAL OF 1,500 POUNDS OF WAKE-CREATING WATER DISPLACEMENT. ON TOP OF THIS MASSIVE INCREASE, A NEW UPWARD ANGLE RADICALLY INCREASES LIFT, ALLOWING THE DRIVER TO GET A FULLY LOADED BOAT PLANING MUCH FASTER, SAVING YOU TIME AND GAS MONEY. THE MORE SYMMETRICAL WAKE THAT THE NEW POWER WEDGE II CREATES IS ALSO TALLER, LONGER, AND CLEANER. ADD SURF GATE AND YOU CAN TRANSFORM YOUR WAKE INTO A WICKED WAVE. THE RESULT IS AN EVOLUTIONARY LEAP BEYOND ALL OTHER WAKEBOARDING AND -SURFING SYSTEMS.



RIDER LEVEL



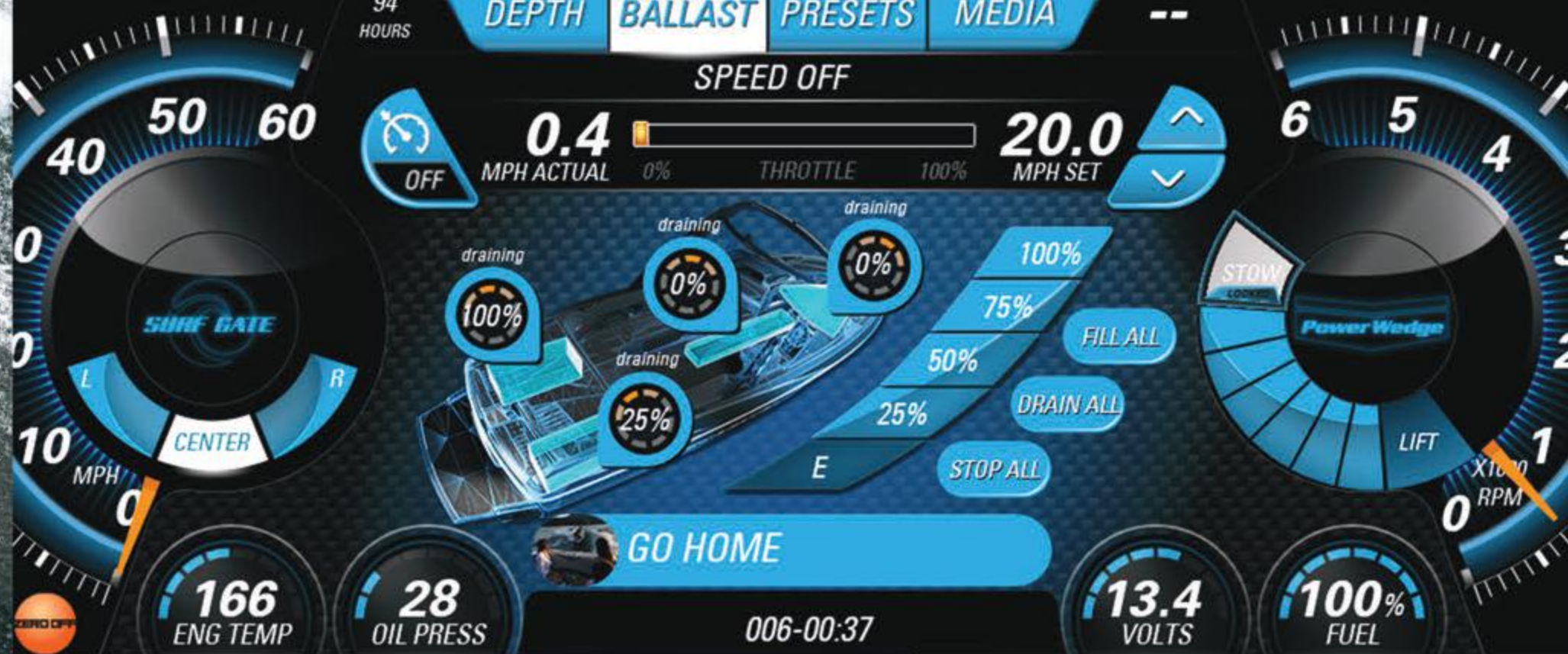
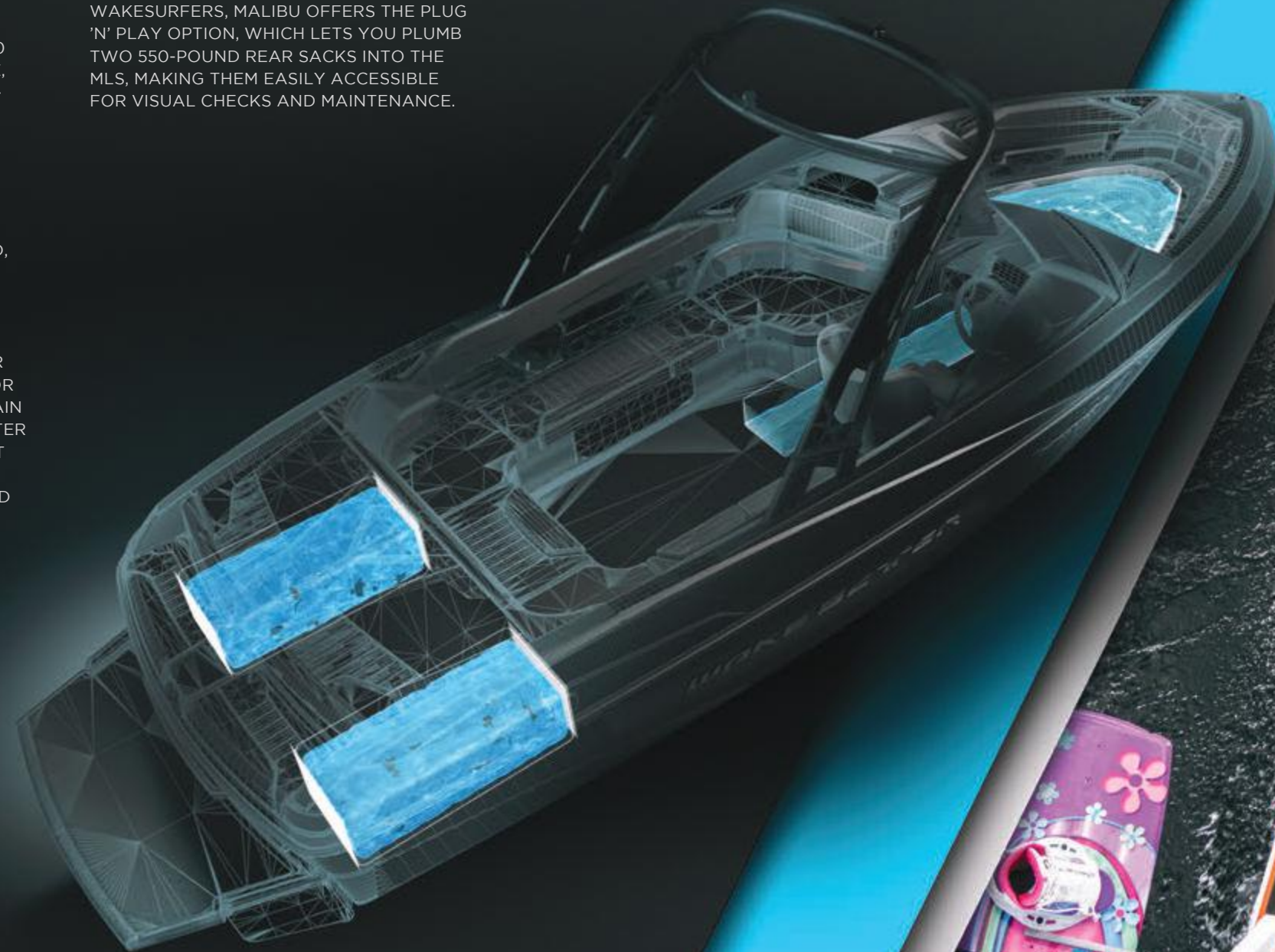
QUAD HARD-TANK BALLAST

MALIBU'S QUAD HARD-TANK BALLAST SYSTEM IS THE BEST, MOST DISCRETE WAY TO ADD SIGNIFICANT WEIGHT OR BALANCE OUT YOUR LOAD TO CREATE THE EXACT WAKE OR WAVE YOU DESIRE. RANGING FROM A TOTAL OF 1,250 POUNDS TO 1,450 POUNDS ACROSS THE WAKESSETTER LINE, HARD-TANK BALLAST HAS A TON OF NO-BRAINER BENEFITS VERSUS THE STOCK BAGS OR SACKS FOUND INSIDE OTHER BRANDS' TOWBOATS.

FIRST, HARD TANKS DON'T COLLECT MILDEW ON THE OUTSIDE AND ADD TO YOUR CLEANING MAINTENANCE. SECOND, OUR TANKS ARE HOUSED UNDER THE FLOORBOARD, SO YOU NEVER HAVE TO COMPROMISE STORAGE. THIRD, HARD TANKS GIVE YOU ACCURATE LEVEL READINGS, WHEREAS SACKS ALL SUFFER FROM INACCURACIES. CHOOSE TO FILL OR DRAIN ONE TANK AT A TIME OR FILL/DRAIN ALL WITH A TAP OF THE COMMAND CENTER TOUCHSCREEN. LASTLY, SACKS ARE JUST SOFT, EXPOSED TO THE ELEMENTS, AND PRONE TO PUNCTURES, SEAM TEARS, AND FIXTURE LEAKS.

PLUG 'N' PLAY

FOR ADVANCED RIDERS AND WAKESURFERS, MALIBU OFFERS THE PLUG 'N' PLAY OPTION, WHICH LETS YOU PLUMB TWO 550-POUND REAR SACKS INTO THE MLS, MAKING THEM EASILY ACCESSIBLE FOR VISUAL CHECKS AND MAINTENANCE.



ALWAYS CLEAN & CONSISTENT

ASK ANY MALIBU OWNER WHAT THEY THINK ABOUT THEIR WAKE AND THEY'LL MOST LIKELY DESCRIBE IT AS "CLEAN AND CONSISTENT." IT'S WHAT MALIBUS ARE KNOWN FOR. FOR EVERYONE FROM FIRST-TIME RIDERS TO TOP PROS, OUR WAKESSETTERS OFFER THE VERSATILITY TO SET THE SIZE AND SHAPE OF YOUR IDEAL WAKE FOR PEAK PROGRESSION—ALL AT THE DRIVER'S FINGERTIPS WITH OUR ACCURATE, ADJUSTABLE BALLAST SYSTEM AND BIGGER, MORE VERSATILE, HYDRAULIC POWER WEDGE II.

SURF GATE

▶ IMAGINE TOTAL WAKE CONTROL AT YOUR FINGERTIPS. IT'S YOURS WITH MALIBU'S REVOLUTIONARY SURF GATE, THE FIRST WAVE-MAKER TO APPEAR ON THE MARKET. SURF GATE HAS CONSISTENTLY AND EASILY OUTPERFORMED AND OUTSOLD EVERY COMPETITOR COPY SINCE IT CAME OUT. WITH AN ALMOST 100 PERCENT ADOPTION RATE, WE SELL WELL OVER 3,000 SURF GATE SYSTEMS PER YEAR, DWARFING OUR COMPETITION. EQUIPPED WITH THE SURF GATE, OUR BIGGER, MORE VERSATILE, HYDRAULIC POWER WEDGE II, THE REFINED ENGINEERING

OF OUR WAKE-AND-WAVE-MAXIMIZING HULLS, AND OUR ON-THE-FLY QUAD HARD-TANK AND PLUG 'N' PLAY BALLAST SYSTEMS, MALIBU'S 2015 MODELS CAN MAKE MONSTER WAKES AND THEN LITERALLY TURN THEM INTO THE BIGGEST WAVES THE INDUSTRY HAS EVER SEEN, CREATING THE MOST DYNAMIC PLAYGROUND FOR WAKESURFING EVER. ALL YOU HAVE TO DO IS LIFT A FINGER TO TRANSFORM THE WORLD'S BEST WATERSPORTS WAKE INTO A PERFECT, SURFABLE WAVE, EASILY SHIFTING THE LIP FROM SIDE TO SIDE FOR TRANSFERS AND REGULAR OR GOOFY FOOT. FAST ACTUATORS ON THE DUAL SURF GATES MEAN EASIER TRANSFERS, AND AN INDICATOR HORN AND OPTIONAL LIGHT SIGNALS LET RIDERS KNOW WHEN TO MAKE THEIR MOVE. PASSENGERS NEVER HAVE TO PILE UP AND LEAN THE BOAT; THEY CAN JUST SIT BACK, RELAX, AND ENJOY THE ACTION WHILE THE DRIVER CONTROLS IT ALL WITH EASE, GIVING SURFERS A SMOOTH, GLASSY, CUSTOMIZED WAVE ON EITHER SIDE. SURF GATE IS NOT ONLY THE ORIGINAL; IT'S TRULY THE ULTIMATE WAKESURF SYSTEM.



THE ULTIMATE WAKESURF SYSTEM



POWER

▶ MALIBU SETTLES FOR NOTHING LESS THAN THE FINEST, RUNNING WHAT ARE WITHOUT A DOUBT THE INDUSTRY'S TOP MARINIZED ENGINES, OPTIMIZED FOR LIFE ON THE WATER. OUR MONSOON ENGINES START AT 350 HORSEPOWER AND GO UP TO A SUPERCHARGED 555. TALK TO YOUR DEALER ABOUT WHICH POWERHOUSE IS RIGHT FOR YOU, THEN PAIR IT WITH THE IDEAL PRECISION-MACHINED PROPELLER. AND IF THE OCEAN IS YOUR AIM, YOU'LL WANT OUR SALT RESISTANCE PERFORMANCE PACKAGE, AVAILABLE FOR EVERY ENGINE EXCEPT THE 555 LSA.

FIBERGLASS ENGINE-CHASSIS SYSTEM (FibECS)

MALIBU'S PATENTED INNOVATION IS THE BACKBONE OF EVERY SINGLE HULL: THE ENGINE IS THROUGH-BOLTED TO THE FIBECS SPAR, WHICH TRANSLATES TO A QUIET, VIBRATION-FREE RIDE WHILE ALLOWING ACTIVE AIR INDUCTION, FOR BETTER PERFORMANCE AND DURABILITY. THIS CONSTRUCTION TECHNIQUE CREATES A STRONGER HULL AND A SMOOTHER RIDE FOR EVERY BOAT.



- ▶ **MONSOON 350:** 5.7L CAT – 350HP – 1.5:1 Gear Ratio*
- ▶ **MONSOON 409:** 6.0L CAT – 410HP – 1.5:1 Gear Ratio*
- ▶ **MONSOON 450:** 6.0L HO CAT† – 450HP – 1:1 Gear Ratio
- ▶ **MONSOON 450 LS3:** 6.2L CAT Closed Cooling‡ – 450HP – 1.5:1 Gear Ratio
- ▶ **MONSOON 555 LSA:** 6.2L Non-CAT§ – 555HP – 1.5:1 Gear Ratio

* For Response Series Direct Drive, gear ratio is 1:1.
† Available as Response Series Direct Drive only.
‡ Available as V-drive only.
§ Available as V-drive only; not available from California dealers.

UPGRADE TO INBOARD : IT'S THE WISEST WAY TO GO

WHY CHOOSE A MALIBU V-DRIVE OVER A TRADITIONAL I/O? BECAUSE IT'S SMARTER, SAFER, AND STRONGER.

A MALIBU V-DRIVE DOES EVERYTHING AN I/O CAN DO AND MUCH, MUCH MORE:

- Zero bow rise. Clean sightlines. No standing necessary.
- Faster, tighter turns. No rollover. Unequaled agility.
- Customized wakes for boarders and surfers of all levels.
- The maximized torque of V8 engines. I/O V6 engines can't provide the necessary muscle.
- Augmented with unique watersports technologies like the Power Wedge II, Surf Gate, and much more.
- Ride, surf, ski, tube. Wakes or waves on demand.
- A safer propeller, positioned well under the boat, away from swimmers and surfers.



THE MALIBU WAY

YOU DREAM IT. WE'LL BUILD IT.

Every Malibu is made to order, a fully custom design based on your exact specifications and your vision for the ultimate ride. Since Malibu was born, we've focused on building nothing less than the best watersports boats in the world—and we've achieved this through an unprecedented focus on cutting-edge engineering, design, and performance, with relentless attention to detail. We rigorously test prototypes in the lab and out in the field, never compromising on anything. We also listen very, very closely to our pros, customers, and dealers. And we watch the industry like a hungry hawk. Innovation and performance are our touchstones. You having the best of the best is our goal. And our people make it all possible.

It's no accident Malibu makes the best-handling watersports boats on earth. The mantra around our factories is a simple one: "continuous improvement." Every hour of every day, we're looking to top ourselves. We do everything possible in-house and are always working to bring more under our roof, for the highest possible quality control. This is as true in our Australian factory as it is in our U.S. factories, in Tennessee and California. We're all united in our quest to be the absolute best. Some of our competitors think as few as two layers of woven hull is enough, and most use only six; we don't stop until we've laid up eight. Our Wakesetters feature beam widths ranging from 98 to 102 inches; some in our industry stop at 92. We're the only ones who make our own towers, saving you thousands at retail. This year alone, six new parts are being produced in our machine shop, so that we control costs and the supply chain, giving you the highest quality at the lowest possible price.

This passionate dedication ripples outward endlessly. Consider our safety record: 60,000-plus boats on the water without a problem. Count our people on the ground: Malibu has the largest domestic and international dealer network, just waiting to serve you. And, of course, just look at our fans: our people are the heart and soul of our company, but our fans are the lifeblood, out there living a life without limits on the water, showing the world the Malibu way.



THE BEST-SELLING, MOST VERSATILE WATERSPORTS

Malibu is known for being the most innovative company in the history of the watersports industry, with a long honor roll of cutting-edge catalysts. We shifted the market from direct-drive boats to high-performance V-drive boats, and we introduced the first wake-specific hull; the first onboard computer system; the ingenious Power Wedge; the revolutionary Surf Gate; and the best-selling ski/wake/surf boat of all time, the Wakesetter 23 LSV.

INNOVATIVE, AND MOST BOATS IN THE WORLD

Year after year, Malibu sells more watersports boats than anyone else. In five short years, we've gone from being second in market share to being far and away the leader. But all of this success isn't because we're lucky. It's because we're really, really competitive. Our industry-changing innovations, incredible versatility, and ideal mix of performance and pleasure lead the pack. Our competition simply can't keep up.

WAKESETTER SERIES



WAKESETTER
20 VTX



WAKESETTER
22 VLX



WAKESETTER
23 LSV



WAKESETTER
247 LSV



WAKESETTER
20 MXZ



WAKESETTER
22 MXZ



WAKESETTER
24 MXZ



WAKESETTER / 20 VTX

▶ THE CROSSOVER KING



20 VTX

DO-IT-ALL DREAM

▶ RECOGNIZED AS THE BEST CROSSOVER BOAT ON THE MARKET, THE WAKESetter 20 VTX IS IDEAL FOR THE FAMILY THAT LOVES WATERSKIING AS MUCH AS WAKEBOARDING AND SURFING. THE VTX'S 20-FOOT FRAME FITS EASILY INTO THE GARAGE, AND A REMOVABLE CENTER PYLON MAXIMIZES SKIING PERFORMANCE.

WITH A FEW QUICK TAPS ON THE SIX-INCH MTC TOUCHSCREEN, YOU CAN FILL UP TO 1,250 POUNDS OF HARD-TANK BALLAST, SET THE

POWER WEDGE II, AND ENGAGE OUR REVOLUTIONARY SURF GATE TO CREATE THE PERFECT WAVE FOR SURFERS, WHO CAN EASILY TRANSFER FROM SIDE TO SIDE. FOR MULTISPORT ENTHUSIASTS, THE UNIQUE CUT DIAMOND HULL IS SPECIFICALLY ENGINEERED TO LAY DOWN TOURNAMENT-QUALITY SLALOM WAKES. AND WITH SEATING FOR 11 PEOPLE, THE 20 VTX IS ROOMY ENOUGH TO SHOW YOUR FRIENDS WHAT IT'S LIKE TO RIDE IN MALIBU STYLE.



▶ 20 VTX SPECIFICATIONS

LENGTH	20'/6.10m
BEAM	98"/2.49m
DRAFT	22"/0.56m
CAPACITY	11 people
FUEL	38 gal./144L
WEIGHT	3,500 lbs./1,588kg
HULL TYPE	Cut Diamond
POWER	350-450HP

STANDARD FOR 2015

- ▶ • New G3.2 Tower with easy latching
- Zero Off GPS Cruise
- New Livorsi throttle
- Updated hull graphics
- Battery-isolator switch relocated to walk-through

NEW OPTIONS FOR 2015

- ▶ • Power Wedge II
- G-Force Wet Sounds speakers & amps (see "Towers" page)
- Swivel mounts for tower speakers
- Auto fire extinguisher
- Battery charger with U.S. & European plugs
- Underwater-light color options (green, blue & white)
- Fender locks (4)
- New biminis with surfboard & rope storage
- New metallic gel colors (black, purple & yellow)

See "Standard Packages & Options" for full information on all models.





WAKESETTER / 22 VLX

▶ THE RADICAL REINVENTION



22 VLX

MULTISPORT MACHINE

▶ COMPLETELY NEW FOR 2015, THE WAKESetter 22 VLX—WHICH REPLACES THE 21 VLX—STRETCHES A FULL 22 FEET AND FEATURES A NEW WAKE PLUS HULL, DESIGNED TO DELIVER THAT MASSIVE, PERFECT WAKE FOR BOTH WAKEBOARDING AND WAKESURFING. WITH THE AMAZING NEW DUAL-TOUCHSCREEN COMMAND CENTER, TOTAL CONTROL OF EVERYTHING IS AT YOUR FINGERTIPS, INCLUDING SURF GATE AND THE POWER WEDGE II, WHICH BUILDS EVEN MORE MASSIVE WAKES AND GETS BOATS ON PLANE IN MUCH LESS TIME.

THE 22 VLX EASILY GENERATES THE BIGGEST WAKE IN ITS CLASS, AND YOU CAN FINE-TUNE IT FOR EVERY SKILL LEVEL. MALIBU'S LEGENDARY ARTISANAL CRAFTSMANSHIP IS EVIDENT IN EVERY ASPECT OF THIS BEAUTY, WHICH IS PERFECT FOR PROS AND FAMILIES ALIKE. THIS IS A TRADITIONAL BOW WITH SERIOUS VERSATILITY. GO WITH THE WAKE PLUS HULL FOR PRO-LEVEL WAKES, OR CHOOSE THE DIAMOND HULL FOR A MULTISPORT WAKE.





▶ 22 VLX SPECIFICATIONS

LENGTH	21' 10"/6.65m
BEAM*	102"/2.59m
DRAFT	27"/0.69m
CAPACITY	14 people
FUEL	48 gal./182L
WEIGHT	4,300 lbs./1,950kg
HULL TYPE	Wake Plus/Diamond
POWER	350-555HP

STANDARD FOR 2015

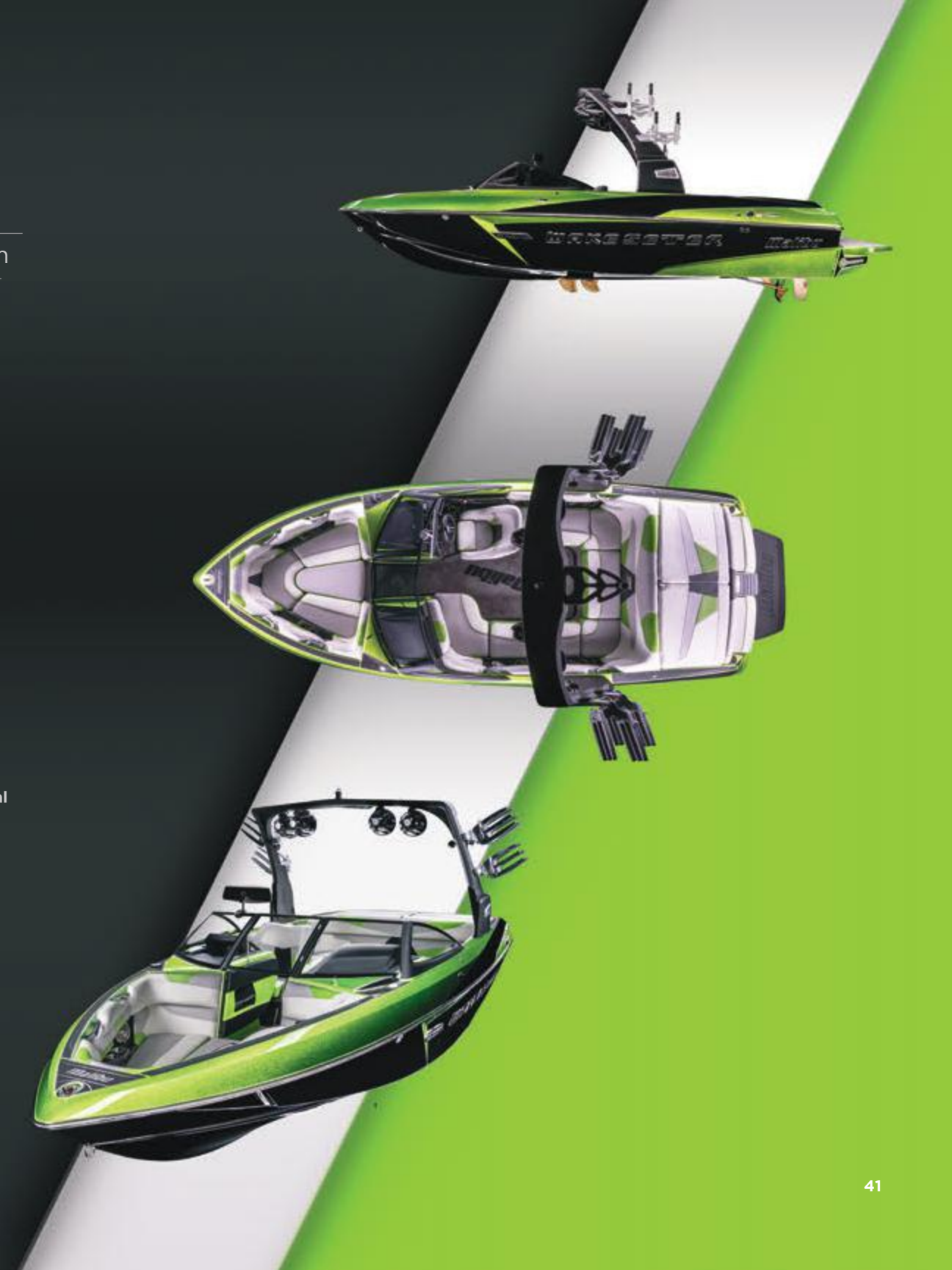
- New Command Center
- New G3.2 Tower with easy latching
- Zero Off GPS Cruise
- New three-profile Livorsi throttle
- Service reminders
- New steering wheel
- Transom seating
- Drop-in Igloo cooler
- Updated hull graphics
- Battery-isolator switch relocated to walk-through

NEW OPTIONS FOR 2015

- G4 Tower
- Power Wedge II
- Sport Dash with multifunction analog control dial
- G-Force Wet Sounds speakers & amps (see "Towers" page)
- Swivel mounts for tower speakers
- Auto fire extinguisher
- Battery charger with U.S. & European plugs
- Underwater-light color options (green, blue & white)
- Fender locks (4)
- WakeView seating
- New Z5 hard-shell bimini with surfboard & rope storage
- New metallic gel colors (black, purple & yellow)

* For our Australian customers, beam is 98"/2.49m.

See "Standard Packages & Options" for full information on all models.





WAKESETTER / 23 LSV

▶ THE ALL-TIME BESTSELLER



23 LSV

FIERCE COMPETITOR

▶ MALIBU'S ALL-TIME BEST-SELLING BOAT IS BACK AND BETTER THAN EVER. THIS 23-FOOTER HITS THE SWEET SPOT AND NOT ONLY SETS BUT CONTINUALLY RAISES THE BAR. IF YOU EVER HEAR ANOTHER WATERSPORTS BOATMAKER ADMITTING HOW FIERCE THE COMPETITION IS, KNOW THAT THEY'RE TALKING ABOUT MALIBU AND THE WAKESSETTER 23 LSV. IT STANDS ALONE AND NEVER LETS UP, ALWAYS DELIVERING UNMATCHED PERFORMANCE, STABILITY, QUALITY, AND SAFETY, NO MATTER THE CONDITIONS—ALL WHILE KICKING UP THE TRULY UNPARALLELED WAKES THAT RIDERS AND SURFERS LIVE FOR.

RUNNING WITH ITS INNOVATIVE WAKE-AND-WAVE-MAXIMIZING HULL, OUR HYDRAULIC POWER WEDGE II, SURF GATE, AND OUR ON-THE-FLY QUAD HARD-TANK AND PLUG 'N' PLAY BALLAST SYSTEMS, THE 23 LSV IS UNBEATABLE OUT ON THE WATER, SETTING UP WHAT ARE WITHOUT QUESTION THE BIGGEST AND BEST WAKES AND WAVES IN THE WORLD OF WATERSPORTS. WITH ALL THIS, MALIBU'S LEGENDARY LUXURY IS JUST THE CHERRY ON TOP.



▶ 23 LSV SPECIFICATIONS

LENGTH	23'/7.01m
BEAM	102"/2.59m
DRAFT	27"/0.69m
CAPACITY	15 people
FUEL	67 gal./254L
WEIGHT	4,500 lbs./2,041kg
HULL TYPE	Wake Plus/Diamond
POWER	350-555HP

STANDARD FOR 2015

- ▶ New Command Center
- ▶ New G3.2 Tower with easy latching
- ▶ Zero Off GPS Cruise
- ▶ New three-profile Livorsi throttle
- ▶ Service reminders
- ▶ New steering wheel
- ▶ Updated hull graphics
- ▶ Battery-isolator switch relocated to walk-through

NEW OPTIONS FOR 2015

- ▶ G4 Tower
- ▶ Power Wedge II
- ▶ Sport Dash with multifunction analog control dial
- ▶ G-Force Wet Sounds speakers & amps (see "Towers" page)
- ▶ Swivel mounts for tower speakers
- ▶ Auto fire extinguisher
- ▶ Battery charger with U.S. & European plugs
- ▶ Underwater-light color options (green, blue & white)
- ▶ Fender locks (4)
- ▶ New biminis with surfboard & rope storage
- ▶ New Z5 hard-shell bimini with surfboard & rope storage
- ▶ New metallic gel colors (black, purple & yellow)

See "Standard Packages & Options" for full information on all models.





WAKESETTER / 247 LSV

▶ THE AGILE GIANT



247 LSV

WAKE WARRIOR

▶ THE WAKESETER 247 LSV IS GUARANTEED TO ELEVATE YOUR WATERSPORTS EXPERIENCE, BOOSTING TRULY MASSIVE WAKES LIKE IT'S NOTHING. JUST SHY OF 25 FEET YET AGILE AND FAST ON THE WATER, THIS HIGH-PERFORMANCE BEAST HANDLES BEAUTIFULLY AND CAN EASILY HAUL A CREW OF 17 IN SERIOUS COMFORT. WITH A TOUCH OF THE THROTTLE, THE 247 LSV LEAPS INTO ACTION, TEARING UP THE WATER WITH ITS WAKE-AND-WAVE-MAXIMIZING HULL.

IT'S THE ULTIMATE PARTY LAUNCHPAD, INCREDIBLY ROOMY AND PLUSH BUT ALWAYS READY TO GO HARD AND FAST. WHEN YOU HIT THE LAKE IN THIS VERY BIG, VERY BAD BOY, YOU FEEL LIKE YOU OWN THE WATER: FULLY LOADED AND RUNNING AT MAXIMUM BALLAST, THE 247 LSV DELIVERS ALL DAY LONG. AND IF YOU'RE OUT LATE, THIS BOAT REALLY SHINES AND GOES BUMP IN THE NIGHT, WITH THEATER-STYLE LED LIGHTING AND HUGE, HIGH-FIDELITY G-FORCE WET SOUNDS SPEAKERS KICKING OUT YOUR FAVORITE TUNES.





▶ 247 LSV SPECIFICATIONS

▶ LENGTH	24' 7"/7.49m
▶ BEAM	102"/2.59m
▶ DRAFT	27"/0.69m
▶ CAPACITY	17 people
▶ FUEL	78 gal./295L
▶ WEIGHT	4,650 lbs./2,109kg
▶ HULL TYPE	Wake
▶ POWER	410-555HP

STANDARD FOR 2015

- ▶ • New Command Center
- New G3.2 Tower with easy latching
- Zero Off GPS Cruise
- New three-profile Livorsi throttle
- Service reminders
- New steering wheel
- Updated hull graphics
- Battery-isolator switch relocated to walk-through

NEW OPTIONS FOR 2015

- ▶ • G4 Tower
- Power Wedge II
- Sport Dash with multifunction analog control dial
- G-Force Wet Sounds speakers & amps (see "Towers" page)
- Swivel mounts for tower speakers
- Auto fire extinguisher
- Battery charger with U.S. & European plugs
- Underwater-light color options (green, blue & white)
- Fender locks (4)
- Dual heater with accordion hoses
- New biminis with surfboard & rope storage
- New Z5 hard-shell bimini with surfboard & rope storage
- New metallic gel colors (black, purple & yellow)

See "Standard Packages & Options" for full information on all models.





WAKESETTER / 20 MXZ

▶ THE SUPER SPORT



20 MX2

MIX MASTER

▶ WANT SUPERIOR WAKES, RESPONSIVE HANDLING, EASY GARAGE STORAGE, AND THE LARGEST COMBINED BOW-AND-LOUNGE AREA AVAILABLE IN A 20-FOOT WATERSPORTS BOAT? MEET THE WAKESETER 20 MX2. MUSCULAR YET LUXURIOUS, EASY TO TRAILER YET A MONSTER ON THE WATER, THE 20 MX2 IS CLASSIC MALIBU, WITH A WAKE-AND-WAVE-MAXIMIZING HULL AND ALL THE HIGH-END DETAILS WE'RE KNOWN FOR IN A RACY PICKLE-FORK DESIGN.

WE BUILT THE 20 MX2 FOR THOSE WHO WANT THAT SUPER-NIMBLE, GO-ANYWHERE, DO-ANYTHING BOAT—BUT WITH MAXIMIZED SEATING AND STORAGE. THAT'S WHY WE CALL IT "THE LITTLE GIANT." IT PUSHES THE 20-FOOT CATEGORY AS FAR AS IT WILL GO, AND IT MORE THAN LIVES UP TO MALIBU'S LEGENDARY MIX OF PREMIER LUXURY AND PERFORMANCE.





20 MX2 SPECIFICATIONS

LENGTH	20'/6.10m
BEAM	100"/2.54m
DRAFT	27"/0.69m
CAPACITY	13 people
FUEL	36 gal./136L
WEIGHT	4,000 lbs./1,814kg
HULL TYPE	Wake
POWER	350-450HP

STANDARD FOR 2015

- New Command Center
- New G3.2 Tower with easy latching
- Zero Off GPS Cruise
- New three-profile Livorsi throttle
- Service reminders
- New steering wheel
- Anchor storage
- Updated hull graphics
- Battery-isolator switch relocated to walk-through

NEW OPTIONS FOR 2015

- G4 Tower
- Power Wedge II
- Sport Dash with multifunction analog control dial
- G-Force Wet Sounds speakers & amps (see "Towers" page)
- Swivel mounts for tower speakers
- Auto fire extinguisher
- Battery charger with U.S. & European plugs
- Underwater-light color options (green, blue & white)
- Fender locks (4)
- New biminis with surfboard & rope storage
- New Z5 hard-shell bimini with surfboard & rope storage
- New metallic gel colors (black, purple & yellow)

See "Standard Packages & Options" for full information on all models.





WAKESETTER / 22 MXZ

▶ THE CELEBRITY TOWBOAT



22 MX2

PRO PULLER

▶ LEGENDARY FOR BECOMING MALIBU'S FASTEST-SELLING BOAT IN ITS VERY FIRST YEAR, THE WAKESSETTER 22 MX2 IS THE PICKLE FORK OF THE PROS. ALSO KNOWN FOR EARNING TOP HONORS AND BEING NAMED THE OFFICIAL TOWBOAT OF THE RED BULL WAKE OPEN, THIS 22-FOOT FLAGSHIP FEATURES A HULL DESIGNED TO DELIVER BOTH WORLD-CLASS WAKES AND PERFECT, BURLY WAVES.

THE 22 MX2 IS A FANTASTIC BOAT FOR ALL SKILL LEVELS, WITH ROOM FOR UP TO 14 PEOPLE—PLUS OPTIONAL WAKEVIEW SEATING—AND MORE THAN ENOUGH POWER TO HAUL THEM ALL AND EASILY KICK UP GIANT WAKES. IT'S A PRO FAVORITE, BUT ITS INCREDIBLE VERSATILITY LETS YOU EASILY MELLOW OUT THE WAKE FOR BEGINNER AND INTERMEDIATE RIDERS. AND WITH OUR REVOLUTIONARY SURF GATE, YOU CAN SWITCH TO WAKESURFING IN SECONDS.



▶ 22 MX2 SPECIFICATIONS

LENGTH	21' 11"/6.68m
BEAM	102"/2.59m
DRAFT	27"/0.69m
CAPACITY	14 people
FUEL	48 gal./182L
WEIGHT	4,400 lbs./1,996kg
HULL TYPE	Wake
POWER	350-555HP

STANDARD FOR 2015

- ▶ • New Command Center
- New G3.2 Tower with easy latching
- Zero Off GPS Cruise
- New three-profile Livorsi throttle
- Service reminders
- New steering wheel
- Drop-in Igloo cooler
- Bow access to the observer box
- Deeper storage
- Updated hull graphics
- Battery-isolator switch relocated to walk-through

NEW OPTIONS FOR 2015

- ▶ • G4 Tower
- Power Wedge II
- Sport Dash with multifunction analog control dial
- G-Force Wet Sounds speakers & amps (see "Towers" page)
- Swivel mounts for tower speakers
- Auto fire extinguisher
- Battery charger with U.S. & European plugs
- Underwater-light color options (green, blue & white)
- Fender locks (4)
- WakeView seating
- New biminis with surfboard & rope storage
- New Z5 hard-shell bimini with surfboard & rope storage
- New metallic gel colors (black, purple & yellow)

See "Standard Packages & Options" for full information on all models.





WAKESETTER / 24 MXZ

▶ THE FULL-SIZE FANTASY



24 MXZ

EPIC EDGE

▶ WHEN YOU BUY A MALIBU, YOU'LL NEVER HAVE TO SACRIFICE PERFORMANCE IF YOU WANT TO GO BIG. WITH THE POWERHOUSE WAKESSETTER 24 MXZ—ONE OF THE BIGGEST WAKE MACHINES ON THE MARKET—YOU CAN BRING THE PARTY AND STILL HAVE THAT EDGE. AMAZINGLY NIMBLE ON THE WATER, THIS 24-FOOT PICKLE FORK FEATURES A WAKE-AND-WAVE-MAXIMIZING HULL AND CARRIES 18 PEOPLE IN STYLE, WITH CUSH SEATING AND AMPLE STORAGE FOR ALL.

THANKS TO MALIBU'S SUPERIOR ENGINEERING AND DESIGN, THE 24 MXZ DOESN'T JUST SEND UP MONSTER WAKES; IT ALSO HANDLES LIKE IT'S ON RAILS. WITH TWO STANDARD GORILLA FINS AND A DEEP-V WAKE HULL, IT CUTS THROUGH THE WATER AND PERFORMS BETTER THAN ANY BOAT IN ITS CLASS.





▶ 24 MX2 SPECIFICATIONS

LENGTH	24' 5" / 7.44m
BEAM	102" / 2.59m
DRAFT	27" / 0.69m
CAPACITY	18 people
FUEL	70 gal. / 265L
WEIGHT	4,800 lbs. / 2,177kg
HULL TYPE	Wake
POWER	410-555HP

STANDARD FOR 2015

- ▶ • New Command Center
- New G3.2 Tower with easy latching
- Zero Off GPS Cruise
- New three-profile Livorsi throttle
- Service reminders
- New steering wheel
- Bow armrests
- Bow anchor storage
- Updated hull graphics
- Battery-isolator switch relocated to walk-through

NEW OPTIONS FOR 2015

- ▶ • G4 Tower
- Power Wedge II
- Sport Dash with multifunction analog control dial
- G-Force Wet Sounds speakers & amps (see "Towers" page)
- Swivel mounts for tower speakers
- Auto fire extinguisher
- Battery charger with U.S. & European plugs
- Underwater-light color options (green, blue & white)
- Fender locks (4)
- Dual heater with accordion hoses
- New biminis with surfboard & rope storage
- New Z5 hard-shell bimini with surfboard & rope storage
- New metallic gel colors (black, purple & yellow)

See "Standard Packages & Options" for full information on all models.



RESPONSE SERIES

SKI INTO THE 21ST CENTURY

WITH FOUR WORLD RECORDS AND COUNTING, THE TXi IS THE OFFICIAL TOWBOAT OF THE MALIBU OPEN AND THE FLAGSHIP OF OUR RESPONSE SERIES, PULLING THE WORLD'S BEST PROS TO EVER-BIGGER WINS ON THE INDUSTRY'S FLATTEST WAKES—AND IT JUST KEEPS GETTING BETTER. MALIBU'S FOCUS ON ITS WORLD-CLASS SKI PEDIGREE IS STRONGER THAN EVER, AND THE TXi REMAINS THE BOAT TO BEAT.





RESPONSE TXi

▶ THE SKI DEMON



RESPONSE TXi

FLAT-OUT FUN

▶ FOUR WORLD RECORDS AND COUNTING HAVE BEEN SET BEHIND THE RESPONSE TXi, A GORGEOUS BOAT KNOWN FOR LAYING OUT THOSE PERFECT, FLAT WAKES THAT WATERSKIERS LIVE FOR. WITH THE LASERLIKE TRACKING OF ITS THREE-FINNED T-CUT DIAMOND HULL PROVIDING BEST-IN-CLASS HANDLING, THE TXi IS SERIOUSLY HOT IN THE PRO WATERSKIING WORLD.

OUT ON THE WATER, YOU CAN EXPECT UNPARALLELED PERFORMANCE AT ANY LINE LENGTH AND SKILL LEVEL. IN FACT, PRO SLALOM CHAMPIONS REGINA JAQUESS, WILL ASHER, AND THOMAS DEGASPERI ALL TAP THE TXi AS THE BEST SKI BOAT OUT THERE. BUT THIS TOURNAMENT MACHINE IS ALSO EQUIPPED WITH THE AUTO-SET WEDGE TO BECOME A MULTIDIMENSIONAL BOAT THE WHOLE FAMILY CAN GET BEHIND.



▶ RESPONSE TXi SPECIFICATIONS

LENGTH	20' 6"/6.25m
BEAM	93.5"/2.37m
DRAFT	22"/0.56m
CAPACITY	9 people
FUEL	40 gal./151L
WEIGHT	2,900 lbs./1,315kg
HULL TYPE	T-Cut Diamond
POWER	350-450HP

STANDARD FOR 2015

- ▶ • New Livorsi throttle
- New steering wheel
- Updated hull graphics
- Pylon cupholder

NEW OPTIONS FOR 2015

- ▶ • New G3.2 Tower with easy latching
- G-Force Wet Sounds speakers & amps (see "Towers" page)
- Swivel mounts for tower speakers
- Auto fire extinguisher
- Underwater-light color options (green, blue & white)
- Fender locks (4)
- Battery charger with U.S. & European plugs
- New biminis with surfboard & rope storage
- New metallic gel colors (black, purple & yellow)

See "Standard Packages & Options" for full information on all models.



RESPONSE



▶ RESPONSE

SPECIFICATIONS

LENGTH	20'/6.10m
BEAM	90"/2.29m
DRAFT	22"/0.56m
CAPACITY	8 people
FUEL	33 gal./125L
WEIGHT	2,450 lbs./1,111kg
HULL TYPE	Diamond
POWER	350-410HP

UNPARALLELED PERFORMANCE

▶ THE RESPONSE EXEMPLIFIES MALIBU'S WORLD-CLASS PERFORMANCE AND LUXURY AS IT HANDLES LIKE A DREAM ON ITS DIAMOND HULL AND LAYS DOWN SUPER-FLAT WATERSPORTS WAKES.

SALT RESISTANCE PERFORMANCE

▶ MALIBU'S SRP PACKAGE OFFERS THE GREATEST PROTECTION AVAILABLE TO KEEP YOUR BOAT PERFORMING AT ITS PEAK ON ANY BODY OF WATER YOU WANT. STAINLESS-STEEL AND CORROSION-RESISTANT UPGRADES ADD EVEN MORE DURABILITY. CHOOSE A 350-, 410-, OR 450-HORSEPOWER ENGINE BUILT SPECIFICALLY FOR SALTWATER ACTION. WITH HYDRAULIC STEERING, A FRESHWATER FLUSH KIT, AND MORE, THE SRP PACKAGE HAS YOU FULLY PROTECTED AND READY TO PLAY IN ANY COASTAL ENVIRONMENT. IT'S HANDS-DOWN THE BEST SALTWATER PACKAGE IN THE WATERSPORTS INDUSTRY.



FEATURES

- HYDRAULIC STEERING
- FRESHWATER FLUSH KIT
- SEA STRAINER
- STAINLESS-STEEL GAS SHOCKS
- ANODIZED SEAT-BASE SLIDE ASSEMBLY
- WARMING BIN THAT DRAINS TO BILGE
- ANODIZED OR STAINLESS-STEEL PYLON
- MARLON TRANSOM DRAIN
- GROUNDING & BONDING OF ALL COMPONENTS BELOW WATER LINE
- SACRIFICIAL ANODES
- CRC & SILICONE SEALANT ON ALL RELEVANT COMPONENTS
- DRIPLESS SHAFT SEAL
- HARNESSES & FASTENERS BUILT FOR MAXIMUM CORROSION RESISTANCE
- SRP BADGING
- WASH-DOWN TANK (N/A WITH PNP BALLAST)



MALIBU PRO TEAM



▶ **THOMAS DEGASPERI**
Ski
@thomasdegasper1

▶ **COBE MIKACICH**
Wakesurf
@cobemik

▶ **TARAH MIKACICH**
Wakeboard
@tarahmik

▶ **OLI DEROME**
Wakeboard
@oliderome

▶ **PHIL SOVEN**
Wakeboard
@philsoven

▶ **AMBER WING**
Wakeboard
@amberwing

▶ **JEFF LANGLEY**
Wakeboard
@jefflangley_

▶ **DALLAS FRIDAY**
Wakeboard
@dallas_friday

▶ **STACIA BANK**
Wakesurf
@staciabank

▶ **WILL ASHER**
Ski
@willasher

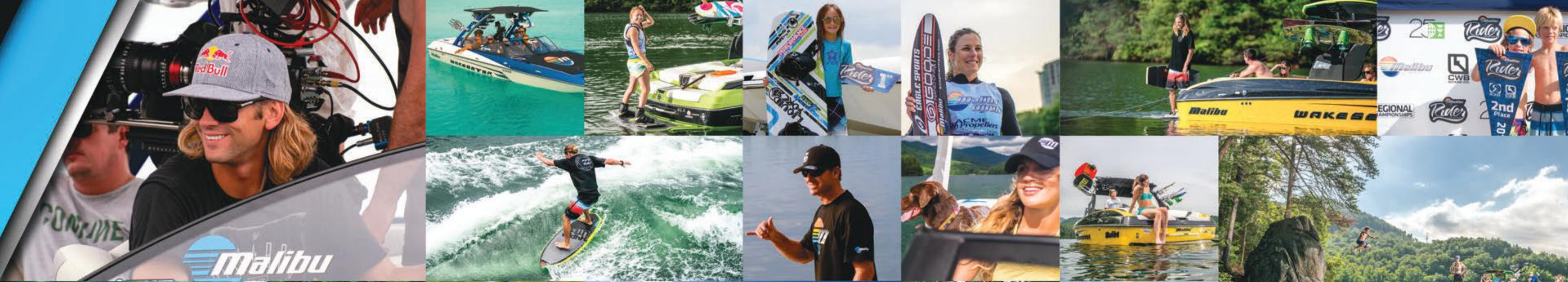
▶ **REGINA JAQUESS**
Ski
@regina_jaquess

▶ **BRIAN GRUBB**
Wakeskate/Wakesurf
@briankgrubb

▶ **RAPH DEROME**
Wakeboard
@raphderome

▶ **PARKER SIEGELE**
Wakeboard
@parkersiegele

▶ **CHAD SHARPE**
Wakeboard
@chadsharpe



MALIBU LIFE

▶ @MALIBUBOATS | FACEBOOK.COM/MALIBUBOATSFAN | #THETRUTHISONTHEWATER

GEL-COAT COLORS



METALLICS

MALIBU'S EXCLUSIVE "BUILD A BOAT" FEATURE LETS YOU CUSTOMIZE YOUR BOAT'S GEL COAT AND VINYL. WITH TEN METALLICS AND 15 SOLIDS TO CHOOSE FROM, YOUR OPTIONS ARE PRETTY MUCH ENDLESS.

- | | |
|-------------------------|-------------------------------|
| 1. YELLOW METALLIC | 6. STRATOSPHERE BLUE METALLIC |
| 2. HOT ORANGE METALLIC | 7. MALIBU GREEN METALLIC |
| 3. CRYSTAL RED METALLIC | 8. BLACK METALLIC |
| 4. PURPLE METALLIC | 9. CHARCOAL METALLIC |
| 5. DARK BLUE METALLIC | 10. MACHINE SILVER METALLIC |



SOLIDS

GO CLASSIC, GO WILD, GO ANY WAY YOU WANT. IT'S UP TO YOU. AND DON'T FORGET THE POSSIBILITIES OF A CUSTOM TRAILER. A TWO-TONE TRAILER WITH METALLIC STEPS AND FENDERS IS AVAILABLE FOR EVERY MODEL.

- | | | |
|-------------------|---------------|-------------------|
| 1. LIGHT GRAPHITE | 6. REUBEN | 11. MOONBEAM |
| 2. YELLOW | 7. DRIFTWOOD | 12. EXTREME GREEN |
| 3. HOT ORANGE | 8. INDY RED | 13. DARK BLUE |
| 4. WHITE | 9. VAPOR BLUE | 14. EBONY |
| 5. CHARCOAL | 10. PLATINUM | 15. MIDNIGHT BLUE |

FEATURED OPTIONS

1. ROCKFORD FOSGATE M2 12-INCH SUBWOOFER: Designed for free-air/infinite-baffle applications. UV- and moisture-resistant.

2. OPTIONAL AGGRESSIVE WAKESSETTER GRAPHIC: Give your Malibu the custom look of a wrap with edgy artwork that extends above the rub rail and across a large portion of the hull. Available on all Wakesetters except the 22 VLX and 23 LSV.

3. STE EXHAUST TIPS: STE exhaust tips are built with specially designed baffles to reduce engine noise without any performance losses.

4. SNAP-OUT CARPET: Choose the versatility of our Wet Tek fiberglass floor with removable Malibu-logo carpet or optional Super Fusion or Deckadence mat. Super Fusion retains less water and heat and features superior durability in saltwater environments.

5. SWIMSTEP LIGHTS: Optional bright-white, blue, or green lights can be mounted on the transom beneath the swimstep. Each of the two lights contain nine 1600-lumen LEDs.

6. CUSTOM TRAILER OPTIONS: Custom Boatmate trailers, with options like two-tone color, Elite Shield Coating, 18" chrome or black alloy wheels with painted inserts, and many more. See your dealer for the full range of possibilities.

7. LADDER: Malibu's retractable swimstep ladder is a family-friendly option that makes the trip from the water to the swimstep effortless.

8. DOCKING LIGHTS: Optional docking lights feature 18 bright-white LEDs that emit an X-shaped beam. Expands the visible area and consumes much less power than traditional halogen.

9. REAR MUX SWITCHES: Passengers can control interior lighting, stereo, rider presets, and more from the backseat. Available in most Wakesetters.

10. POP-OUT HOT-WATER SHOWER: Easy access for a pre- or post-ride rinse, with full temperature adjustability.

11. MOBILE DEVICE GATEWAY: The Mobile Device Gateway connects the boat's dash to your mobile device via Bluetooth. Allows for the streaming of music and uploading of rider presets through the free Perfect-Pull app.



1



2



5



3



6



4



8



4



9



10



11



THE TRUTH IS ON THE WATER



#thetruthisonthewater | @malibuboats | malibuboats.com

Tennessee
5075 Kimberly Way
Loudon, TN 37774
(865) 458-5478

California
One Malibu Court
Merced, CA 95341
(209) 383-7469

Australia
813 Hope Court
Albury, N.S.W. 2640
(02) 6040-1174

Contact us anytime with questions or to schedule a tour of our Tennessee plant: info@malibuboats.com